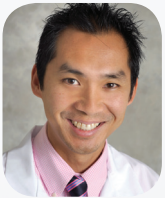




THE INTERNATIONAL SOCIETY  
FOR GYNECOLOGIC ENDOSCOPY

OPTIMIZING OPTIONS IN UTERINE SURGERY  
FOR WOMEN IN 2012 & BEYOND

**MARCH 29 - 31, 2012**  
DISNEY'S CONTEMPORARY RESORT  
ORLANDO, FLORIDA



**SCIENTIFIC CHAIR OF ISGE 2012**

**Arnold P. Advincula, MD**

Medical Director, Global Robotics Institute  
Gynecologic Robotic Surgery Program  
Director of AAGL/SRS Minimally Invasive Gynecologic Surgery  
Fellowship at Florida Hospital Celebration Health  
Professor OBGYN, University of Central Florida College of Medicine

FOR MORE INFORMATION,  
CONTACT SHERI BRAMMER AT (407) 303-4033  
OR [SHERI.BRAMMER@FLHOSP.ORG](mailto:SHERI.BRAMMER@FLHOSP.ORG).

**ISGE 2012 PRICING**

Physicians \$849 | ISGE Members \$749 | Residents \$549  
Allied Health \$399

[WWW.ISGEORLANDO.COM](http://WWW.ISGEORLANDO.COM)

PRE-CONGRESS HOSTED BY ARNOLD P. ADVINCULA, MD

**MARCH 28, 2012**

**Full Day & 1/2 Day Pre-Congress Interactive Hands-on Courses**

- Taking Minimally Invasive Gynecologic Surgery to the Extreme
- Vaginal Surgery Tips & Tricks for Optimizing Dissections and Outcomes
- ABC's of Laparoscopic Suturing
- Understanding Energy in Minimally Invasive Gynecologic Surgery
- SILS, SPA, & LESS: How do I do it?
- Hysteroscopy: From Basic to Advanced
- Robotics in Gynecology

Courses located at the Nicholson Center. For more information, please contact Sheri Brammer at (407) 303-4033 or [sheri.brammer@flhosp.org](mailto:sheri.brammer@flhosp.org).

